

Dear Folks,

I am happy to say that we will be celebrating 1st Eucharist and resuming our regular weekend schedule on May 30 and 31. It seems like an eternity since we last gathered for mass. It will be great to see you and to share together in prayer. We need to recognize that not everyone will be able to come. We will need to continue to reach out remotely to one another in the months ahead. I am very proud and inspired by the loving way that everyone has cared for one another over the past 3 months. It is a great witness to your faith. Let's continue to give a loving witness as continue our journey through this pandemic.

The balance of this communication is a detailed explanation of how we will move forward. Please look it over carefully. Contact myself or the office if you have any questions.

Fr. Steve

Opening Remarks

I'd like to share with you the guidelines that we hope to follow as we open our parish and resuming the celebration of Sunday Eucharist. First and foremost, we need to recognize that this is a learning process for everyone. Consequently, there will be some trial and error as we move forward. We will be continually evaluating our efforts for their effectiveness and fine tuning the process. In order to stay within the ballpark, we will take a cautious approach and loosen up little by little. We hope to achieve some home runs as we seek to avoid strike outs. It is important to remember that the only current tool at our disposal is physical distancing. This must be maintained at all costs. We are allowed to be more conservative, but not more liberal than the guidelines give to us by the State and the Dioceses of Indiana.

Calendar

May 30 – Saturday - 11 am – 1st Eucharist will be celebrated with the immediate families in attendance. 1st communicants only will receive communion. Masks should be worn by all.

May 30 – 3:30-3:45 – Reconciliation regular schedule resumes utilizing the Community Room (former garage) – Enter and leave by the outside door. If the door is open, I will be available without any penitents. If the door is closed, I will be with a penitent. Wait in your car parked facing the outside door. Masks should be worn. Masks will be available at the door, if you do not have one.

May 30 – Saturday – 4:30 pm – Regular Sunday Eucharist will be live streamed with approximate accommodation available for 100 parishioners.

[Parishioners should reserve space online](https://www.signupgenius.com/go/10c0f4caaae2fa0fa7-mass) We will make use of sign up genius. Here is the link for signing up

<https://www.signupgenius.com/go/10c0f4caaae2fa0fa7-mass>

If you are unable to sign up on line, please call the office. We will then reserve a space for you. Masks should be worn by all. A limited number of masks will be available for those who do not have a mask.

May 31 – Sunday – 8:00 am and 11:00 am Regular Sunday Eucharist will begin with approximate accommodation available for 100 parishioners.

June 6 – going forward the regular weekend schedule of Eucharist and Reconciliation will continue

June 6 or 7 - If Saturday – 10 am – If Sunday 1 pm - Scripture Service with the Reception of the Sacraments of Initiation for the RCIA program – Candidates, sponsors, and immediate family only in attendance.

Physical Distancing Learning Process

This needs to be embraced and followed to assure physical distancing

All people should enter and leave as a family group. This is the time when it is most likely for people to come into contact with one another. To achieve this, family groups are asked to wait in their cars or outside in the areas marked on the concrete entrance. Come early (15 to 20 minutes) so that there is time for things to go smoothly. We will fill up the seating areas farthest from the door first. Areas closest to the door will be dismissed first.

The only entrance and exit to the PLC will be the lobby door. For the Church it will be the one between the office and the bell tower

An usher will show you into the church one family group at a time to your seating.

All should wear masks. (A limited supply of masks will be available on a table by the entrance for those who do not have a mask. They will be laid out one by one.)

You should remain at your chair or pew till the end of mass. By limiting singing, dropping the creed, it is possible to shorten the mass to 40 minutes or less.

Bathroom breaks should be for emergency use only. Please prepare before coming to mass.

In the church, the Cry room can be utilized by only 1 family at a time – one family group per mass and on a first come first served basis.

For now there will not be the distribution of communion. If there is not a spiking of the numbers by the end of June or early July we will cautiously begin the distribution of bread only. However, to minimize the possibility of contact, it will be done at the end of mass as family groups are ushered from the church. The Eucharistic Minister distributing communion would stand near the exit.

In that loud strong singing pushes your breath out further, you are encouraged to sing softly without directly facing anyone. Masks must be worn. Singing may be eliminated if it begins to be a threat similar to continuous coughing or sneezing.

There will be a basket at the door of the church for offering envelopes that you can utilize as you enter.

Mass programs and bulletins will be already placed on the chairs.

Other changes to eliminate chance of physical contact – There will not be an offertory procession. Mass will be celebrated without servers.

Volunteers Needed To Make This Work

Younger parishioners (less than 50 years old) need to step forward to clean the church after every Eucharist, to be lectors, and Eucharistic Ministers.

Vulnerable parishioners should remain at home and watch the live streaming of the 4:30 mass, or watch it shortly thereafter when it will be posted on the web – www.youtube.com – search for **St Rose of Lima, Franklin IN**. If you “subscribe” to this channel, it will help you find it down the road. Note: if you hover the cursor over the bottom area of the box with the live streaming, some menus will appear. One these is marked **CC**. Clicking on this will allowed closed captioning to appear. A little further searching will allow you to change the color of the text and the background.

Vulnerable parishioners are those with health vulnerabilities and those in their 60’s or older. In Indiana 91.3% of all death have occurred among those 60 or older; 95.1% for those 50 or older. There is a grey area where one’s chronological age is not the only consideration. There are those with strong genetics and no health issues who are past 60. At the same time there are younger people with weaker genetic backgrounds who have health issues that make them vulnerable. The majority of younger people who have passed had other medical issues. To recognize this grey area, we are asking vulnerable people to volunteer to remain at home.

Archbishops Thompson’s Reopening Letter

<https://docs.google.com/a/stroselions.net/viewer?a=v&pid=sites&srcid=c3Ryb3NIbGlbnMubmV0fHBjLXN0cm9zZXxneDozNGE2YmM5OTg3MzE4YT13>

This is also available at www.archindy.org

Archdiocesan Guidelines For Reopening Churches

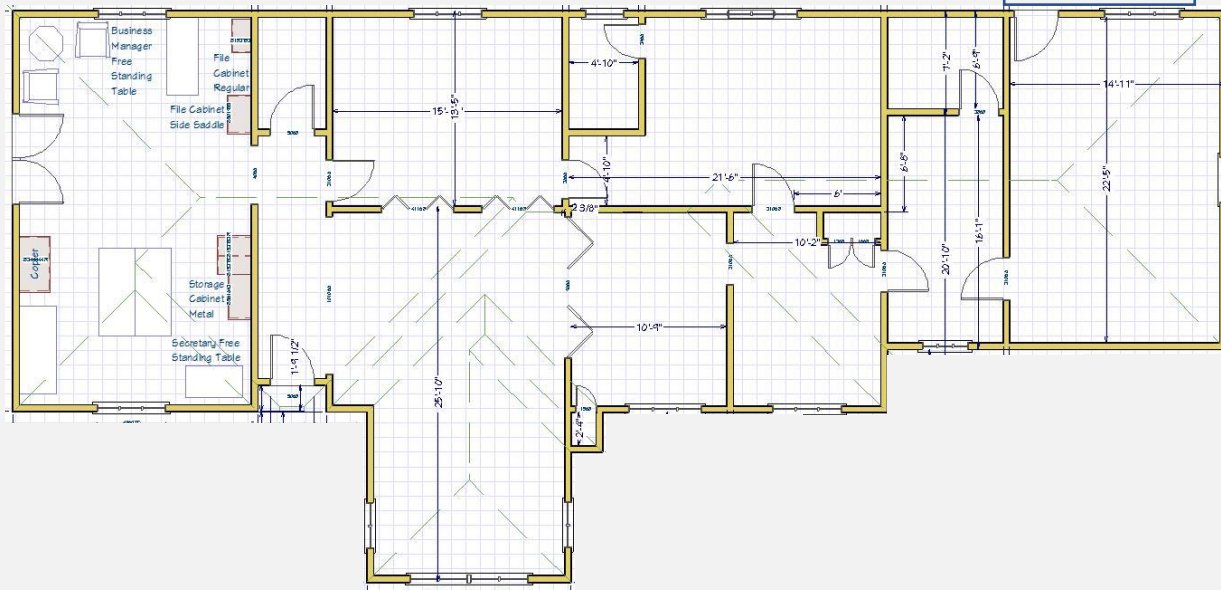
<https://docs.google.com/a/stroselions.net/viewer?a=v&pid=sites&srcid=c3Ryb3NIbGlbnMubmV0fHBjLXN0cm9zZXxneDoxMDhiN2YxOTcyMWY0ODY3>

This is also available at www.archindy.org

***A Disciplined Practice of Physical Distancing
Is Our Best Insurance Policy
For Preventing Future Spikes
In Both Positive Corona Cases
And the Re-imposition of Stay At Home Orders.***

For Reconciliation
At The Regular Saturday Afternoon Time 3:30-4:15
Park In The School Parking Lot Facing the Office Building
Watch The Outside Door of the Community Room (Former Garage)
When the doord is open, I am available.
When it is closed there is a penitent inside.

Driveway To The
Community Room





Emergency Exit Only

Arrangements
For
34 Family
Groups
In Addition
To The
Musicians

10 Feet
Between

10 Feet
Between

10 Feet
Between

10 Feet
Between

Sole Entrance & Exit

Blue Areas
Are Closed
Off To
Seating.

Emergency Exit Only

Emergency Exits Only

Everyone should park in the school parking lot and wait in their cars until the usher gets them.
Everyone will be dismissed by family groups one at a time.
Bathrooms are for emergency use only. Please prepare ahead of time.