

Dear Folks,

I want to update you on the precautions we're taking for the celebration of mass. As before it is important to recognize that this is a learning process for everyone. We will be continuing to evaluate our efforts for their effectiveness and fine tuning the process. In order to stay within the ballpark, we will continue to take a cautious approach and loosen up little by little. We hope to achieve some home runs as we seek to avoid strike outs. It is important to remember that the only current tool at our disposal is physical distancing. This must be maintained at all costs. We are allowed to be more conservative, but not more liberal than the guidelines give to us by the State and the Dioceses of Indiana.

Physical Distancing Learning Process

This needs to be embraced and followed to assure physical distancing

All people should enter and leave as a family group. This the time when it is most likely for people to come into contact with one another. To achieve this, family groups are asked to wait in their cars or outside in the areas marked on the concrete entrance. Come early (15 to 20 minutes) so that there is time for things to go smoothly. We will fill up the seating areas farthest from the door first. Areas closest to the door will be dismissed first.

The only entrance and exit to the PLC will be the lobby door. For the Church it will be the one between the office and the bell tower

An usher will show you into the church one family group at a time to your seating.

All should wear masks. (A limited supply of masks will be available on a table by the entrance for those who do not have a mask. They will be laid out one by one.)

You should remain at your chair or pew till the end of mass. By limiting singing, dropping the creed, it is possible to shorten the mass to 40 minutes or less.

Communion – To receive communion please come up the aisle as usual but maintain 6 feet distance from the person in front of you. Cup both hands together and place them through the opening at the bottom of the screen. Return in the normal way. If you wish to receive on the tongue, please wait till last.

Bathroom breaks should be for emergency use only. Please prepare before coming to mass.

In the church, the Cry room can be utilized by only 1 family at a time – one family group per mass and on a first come first served basis.

In that loud strong singing pushes your breath out further, you are encouraged to sing softly without directly facing anyone. Masks must be worn.

Singing may be eliminated if it begins to be a threat similar to continuous coughing or sneezing.

There will be a basket at the door of the church for offering envelopes that you can utilize as you enter.

Mass programs and bulletins will be already placed on the chairs.

Other changes to eliminate chance of physical contact – There will not be an offertory procession. Mass will be celebrated without servers.

Volunteers Needed To Make This Work

Younger parishioners (less than 50 years old) need to step forward to clean the church after every Eucharist, to be lectors, and Eucharistic Ministers.

Vulnerable parishioners should remain at home and watch the live streaming of the 4:30 mass, or watch it shortly thereafter when it will be posted on the web – www.youtube.com – search for **St Rose of Lima, Franklin IN**. If you “subscribe” to this channel, it will help you find it down the road. Note: if you hover the cursor over the bottom area of the box with the live streaming, some menus will appear. One these is marked **CC**. Clicking on this will allowed closed captioning to appear. A little further searching will allow you to change the color of the text and the background.

Subscribe to the Youtube Channel For St Rose of Lima, Franklin, IN

If you subscribe to St. Rose’s Youtube channel you will receive an automatic link to our live mass streaming.

Go to www.youtube.com

Search for **St Rose of Lima, Franklin, IN**

Once you’ve found one of the live stream videos, tap on **Subscribe** below the video.

Vulnerable parishioners are those with health vulnerabilities and those in their 60’s or older. In Indiana 91.3% of all death have occurred among those 60 or older; 95.1% for those 50 or older. There is a grey area where one’s chronological age is not the only consideration. There are those with strong genetics and no health issues who are past 60. At the same time there are younger people with weaker genetic backgrounds who have health issues that make them vulnerable. The majority of younger people who have passed had other medical issues. To recognize this grey area, we are asking vulnerable people to volunteer to remain at home.

Archbishops Thompson’s Reopening Letter

<https://docs.google.com/a/stroselions.net/viewer?a=v&pid=sites&srcid=c3Ryb3NlbGlbnMubmV0fHBjLXN0cm9zZXxneDozNGE2YmM5OTg3MzE4YTl3>

This is also available at www.archindy.org

Archdiocesan Guidelines For Reopening Churches

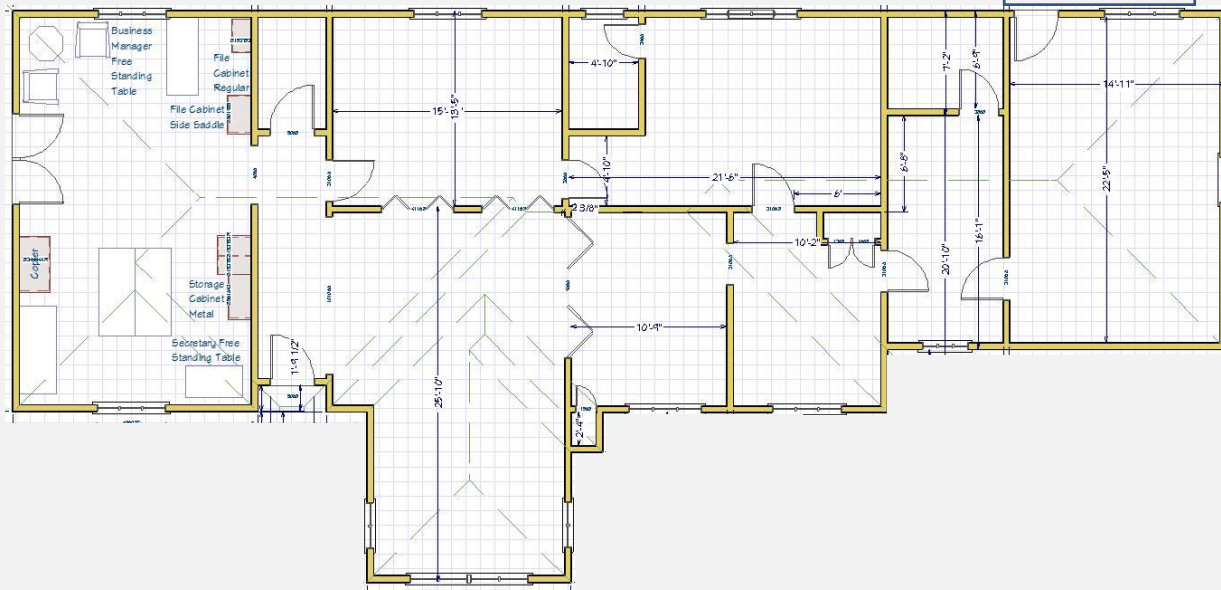
<https://docs.google.com/a/stroselions.net/viewer?a=v&pid=sites&srcid=c3Ryb3NlbGlbnMubmV0fHBjLXN0cm9zZXxneDoxMDhiN2YxOTcyMwY0ODY3>

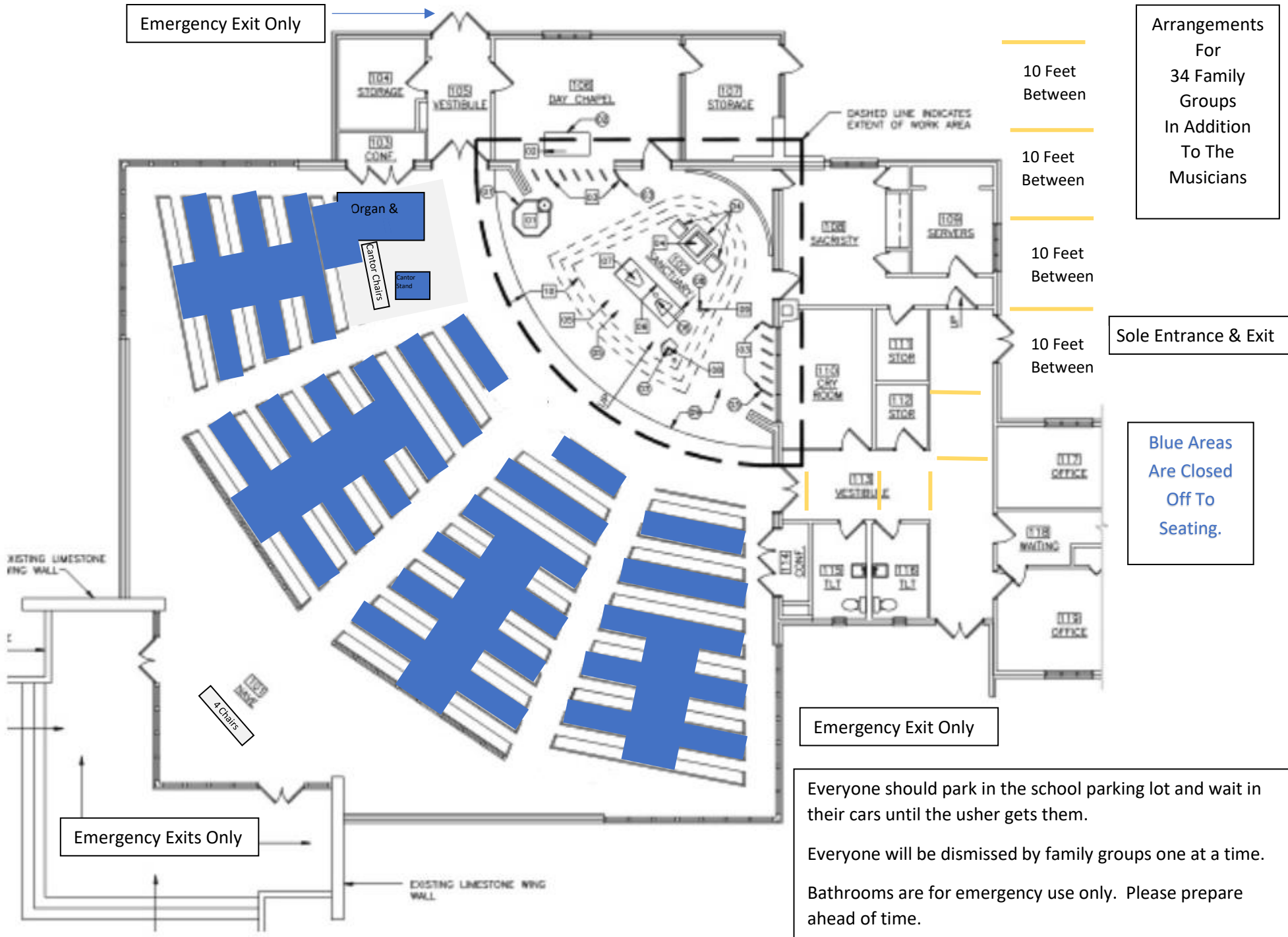
This is also available at www.archindy.org

*A Disciplined Practice of Physical Distancing
Is Our Best Insurance Policy
For Preventing Future Spikes
In Both Positive Corona Cases
And the Re-imposition of Stay At Home Orders.*

For Reconciliation
At The Regular Saturday Afternoon Time 3:30-4:15
Park In The School Parking Lot Facing the Office Building
Watch The Outside Door of the Community Room (Former Garage)
When the doord is open, I am available.
When it is closed there is a penitent inside.

Driveway To The
Community Room





Arrangements
For
34 Family
Groups
In Addition
To The
Musicians

Sole Entrance & Exit

Blue Areas
Are Closed
Off To
Seating.

Emergency Exit Only

Emergency Exits Only

Everyone should park in the school parking lot and wait in their cars until the usher gets them.

Everyone will be dismissed by family groups one at a time.

Bathrooms are for emergency use only. Please prepare ahead of time.

Church VS PLC or Outdoor Masses

In the interest of safety most of the time, we should probably have mass in the PLC which has 37% more square footage, approximately 2.6 times the volume of air, and an air flow system that moves the air downward from the ceiling to the floor where it moves horizontally over to the return which is located at floor level near the store room. This is good for the prevention of the spread of a virus. The air flow in the church is exactly the opposite which is bad for the prevention of the spread of a virus. The air moves from the floors of the outside walls at the sides and the rear of the church and then upward to the return which is located at ceiling level behind the altar and cross.

Since we are required to “sanitize” the worship space in between services, it might be an option to have a smaller number of parishioners to celebrate mass at 8 am in the church. This would allow the PLC to be cleaned once overnight and would eliminate the need to quickly sanitize the space between the 8 and 11 am masses. If we utilize the church, the fans will not be utilized since they may tend to keep moisture droplets moving about in the air. To compensate for this, we would try to cool the church to the low 60's overnight.

There are days when it would be very comfortable to have mass outside. But the weather is unpredictable, and it would take extra effort to setup outside. So, for now we will experiment with the PLC.

Here's the latest.

I've not heard anything as yet about my neighbors being + or -. Just in case they turn out positive, I did get tested at the Armory last evening but won't know until Sunday.

Eileen and I already made a decision to move the RCIA to June 6 or 7.

In an early email I sent you the research on the sizes and advantages and disadvantages of the church and PLC. I've changed things around assuming we would primarily be using the PLC.

Note reconciliation would remain in the Community Room

A parishioner raised the issue of singing. The guidelines allow us to make singing optional.

Volunteers will be recruited by all with an emphasis on the K of C, youth group, &?

Pray that both my neighbors and I get negative results. It would be unfortunate to delay 1st Eucharist until June.

How to arrange masks by the door. Laid out one by one and or ???